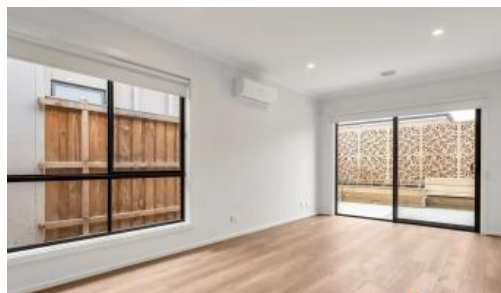




8 Athena Rd, Weir Views



## Perfect Family Home – Move In & Enjoy

Located in a new and growing area close to schools, shops, parks, and transport ~~XXXXX~~, this property is ready for you to move in and enjoy ~~XX~~. Offering three generous bedrooms, including a master suite with walk-in robe and ensuite ~~XXX~~, there is plenty of space for the whole family. The delightful kitchen features a 900mm cooktop and oven, quality stainless steel appliances, and ample storage ~~XX~~. An open-plan living and dining area is perfect for entertaining ~~XXXXX~~, while the low-maintenance backyard provides easy outdoor living ~~X~~.

Additional features include ceiling fans to all bedrooms ~~XX~~, a split system for year-round comfort ~~XXXXX~~, two stylish bathrooms with quality fittings ~~XX~~, a main bathroom with a

3 2 2

Price \$420 per week

Property Type Rental

Property ID 2211

### Agent Details

Trish Cooper - 0413303332

### Office Details

Residential

24A Kanowna St

Williamstown, VIC, 3016

Australia

03 9747 9111



large bath perfect for relaxing ☑, and a double garage with internal access ☑.

Don't miss your chance to make 8 Athena Rad yor new address!

Private inspection available - contact Cooper Real Estate on (03) 97479111 to arrange your viewig today.

The above information provided has been furnished to us by the vendor/s. We have not verified whether or not that information is accurate and do not have any belief in one way or the other in its accuracy. We do not accept any responsibility to any person for its accuracy and do no more than pass it on. All interested parties should make and rely upon their own inquiries in order to determine whether or not this information is in fact accurate.